



## Early Years SEND team

The team is managed by Jane Todd Early Years Area SENCo.

Team members are fully qualified childcare professionals with a wide range of additional experience and qualifications relating to babies and young children with Special Educational Needs and Disabilities.

The Early Years SEND team work closely with a multiagency team.



The Early Years SEND team offers a key-working service to families.

Key-working aims to coordinate services for the family.



For more information please contact Grangetown Family Hub on

01642 770810

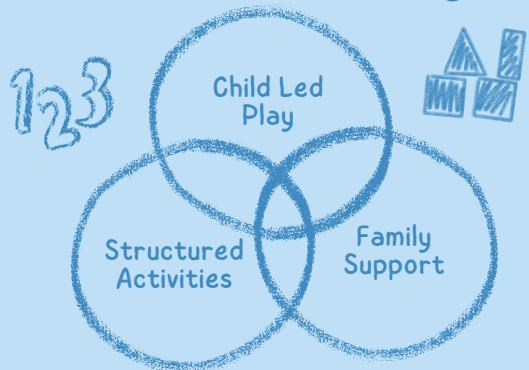


## Early Years SEND & Portage



Working in partnership with parents and carers to support the development of children from 0 to 4 years who have additional needs

# What is Portage?



Portage is a home visiting educational service for children with additional needs from birth to 4yrs.

The aim of the Early Years SEND team is to support the development of play, communication, relationships and full participation in day-to-day life within the family and community.

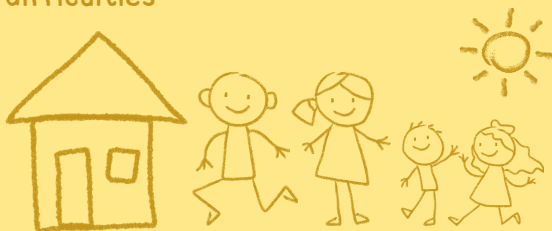
The Early Years SEND team is based on the principle that parents/carers are the key figures in the care and development of their child. The Portage model aims to help parents/carers be confident in this role whatever the child's needs.



# Who is the Early Years SEND team for ?

Early Years SEND team is available to families who:

- Live in Redcar and Cleveland
  - Have a preschool child who has significant delay in more than two areas of their development
- or
- A diagnosis which may predict such difficulties



# Who can refer to Portage?

Parents/carers can refer themselves by ringing the number below.

Any professional who knows the child.

For all referrals, please complete a Family Hub Referral Form and email to:  
[Familyhubs@redcar-cleveland.gov.uk](mailto:Familyhubs@redcar-cleveland.gov.uk)

Forms can be provided on request by emailing:  
[Jane.todd@redcar-cleveland.gov.uk](mailto:Jane.todd@redcar-cleveland.gov.uk)

Or

[Tracy.waldegrave@redcar-cleveland.gov.uk](mailto:Tracy.waldegrave@redcar-cleveland.gov.uk)



# Support from the Keyworker

- Families are offered home visits by their trained Early Years SEND Practitioner and invited to Portage groups.
- Families share with the Early Years SEND Practitioner their knowledge of their child's individual abilities and difficulties.
- Together parents/carers and the Practitioner plan activities which the family can practise and enjoy together.
- These activities are based on play in everyday situations to provide fun and success for the child.
- The practitioners offer support with accessing benefits.
- Identifying a nursery that can meet children's individual needs.
- Work in partnership with parents and professionals to plan the education pathway for children.

