



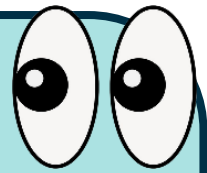
**Rye Hills  
Academy**

# Transition Pack

**My name:**

**[www.ryehillsacademy.co.uk](http://www.ryehillsacademy.co.uk)**

# What my new school looks like



Redcar Lane Student Entrance

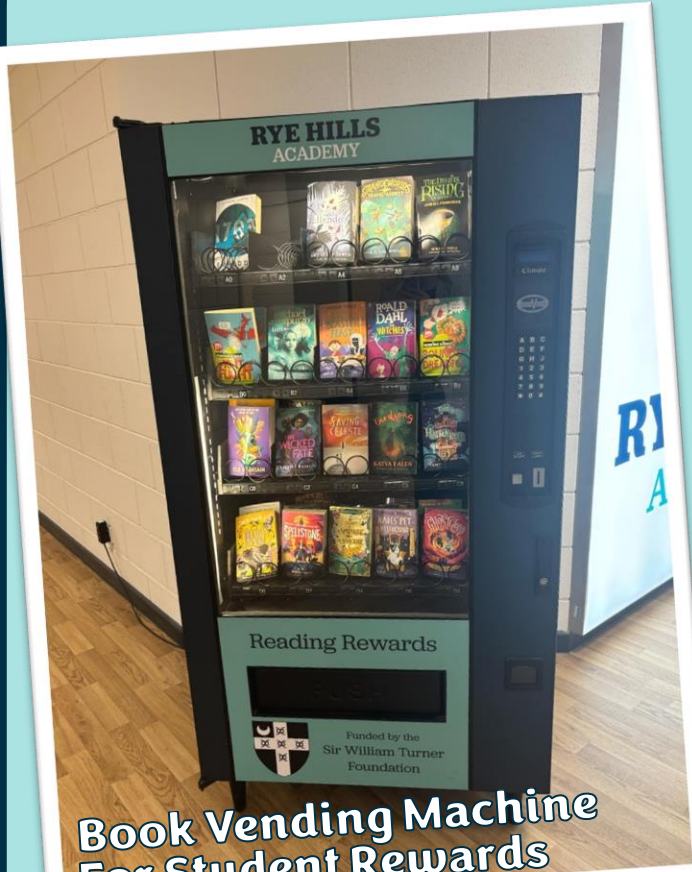


Main Entrance



Main Reception Area





**Book Vending Machine  
For Student Rewards**



**Playground (This one is called Web 3  
we have 4 in total)**

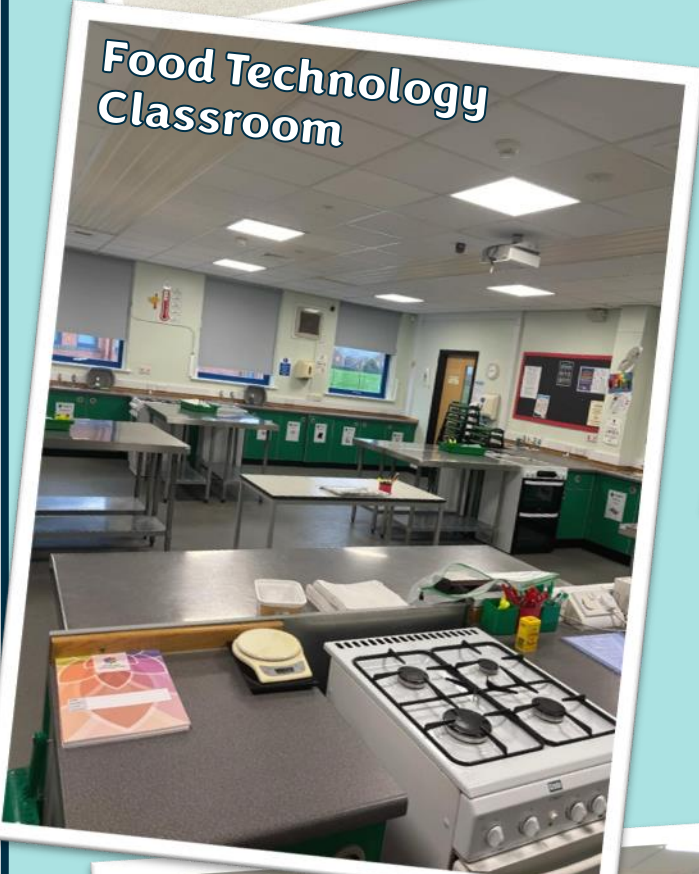
**Classroom**



**Classroom**



**Food Technology Classroom**



**Science Lab**



**Design Technology Workshop**



**Music Classroom**





Dining Hall

## Weekly Menu Choices

**MEAL DEALS**

**MEAL DEAL 1 £2.80**  
Traditional main meal and a dessert OR drink.  
Add a third item for 30p.

**MEAL DEAL 2 £2.80**  
Grab & Go style main.  
Includes sandwich, drink, fruit, dessert, and a choice of any dessert AND a drink.  
(Covers: Monday - Friday, 12:00 - 1:30pm)

**LUNCH MENU - WEEK 1**

MON	TUE	WED	THU	FRI
CHICKEN SANDWICH CUCUMBER SALAD	SPAGHETTI MEAT SAUCE	PIZZA MARGHERITA	CHICKEN CASSEROLE WITH VEGETABLES	MEAT AND VEGETABLES
VEGETARIAN SANDWICH	VEGETARIAN CASSEROLE	VEGETARIAN PIZZA	CHICKEN CASSEROLE WITH VEGETABLES	MEAT AND VEGETABLES
DESSERT	DESSERT	DESSERT	DESSERT	DESSERT

ALSO AVAILABLE DAILY: SELECTION OF SALAD AND VEGETABLES

**LUNCH MENU - WEEK 2**

MON	TUE	WED	THU	FRI
CHICKEN SANDWICH CUCUMBER SALAD	SPAGHETTI MEAT SAUCE	PIZZA MARGHERITA	CHICKEN CASSEROLE WITH VEGETABLES	MEAT AND VEGETABLES
VEGETARIAN SANDWICH	VEGETARIAN CASSEROLE	VEGETARIAN PIZZA	CHICKEN CASSEROLE WITH VEGETABLES	MEAT AND VEGETABLES
DESSERT	DESSERT	DESSERT	DESSERT	DESSERT

ALSO AVAILABLE DAILY: SELECTION OF SALAD AND VEGETABLES

**LUNCH MENU - WEEK 3**

MON	TUE	WED	THU	FRI
CHICKEN SANDWICH CUCUMBER SALAD	SPAGHETTI MEAT SAUCE	PIZZA MARGHERITA	CHICKEN CASSEROLE WITH VEGETABLES	MEAT AND VEGETABLES
VEGETARIAN SANDWICH	VEGETARIAN CASSEROLE	VEGETARIAN PIZZA	CHICKEN CASSEROLE WITH VEGETABLES	MEAT AND VEGETABLES
DESSERT	DESSERT	DESSERT	DESSERT	DESSERT

ALSO AVAILABLE DAILY: SELECTION OF SALAD AND VEGETABLES



## Cashless Payment System

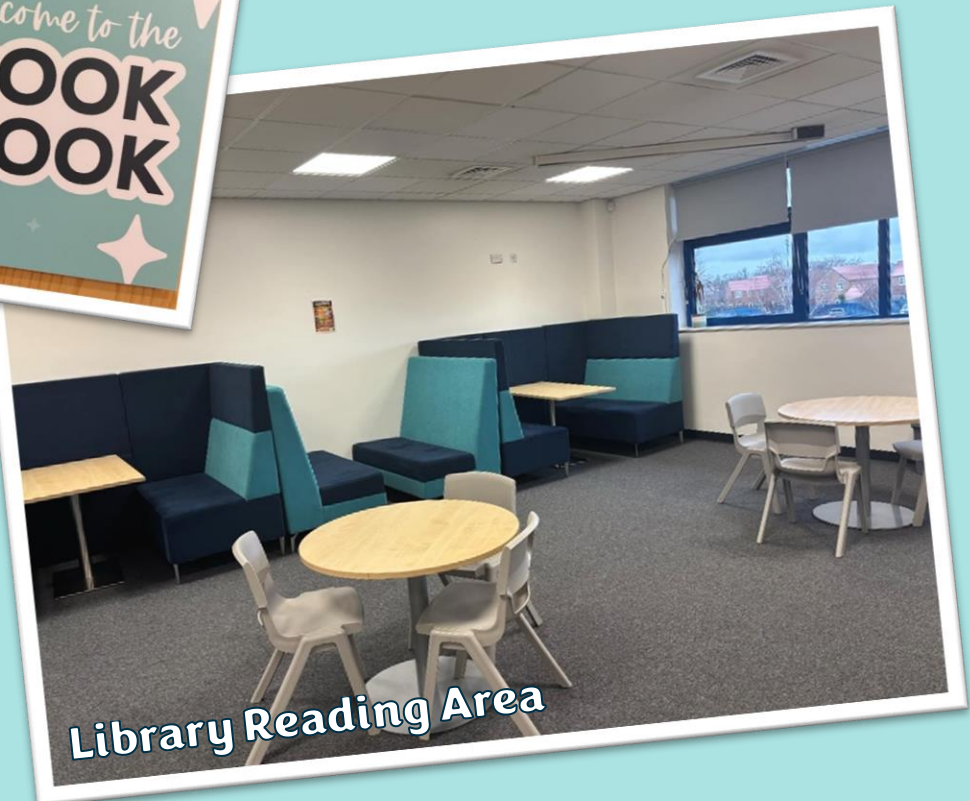
You can add cash on to your account with this machine or online using ParentPay



Library



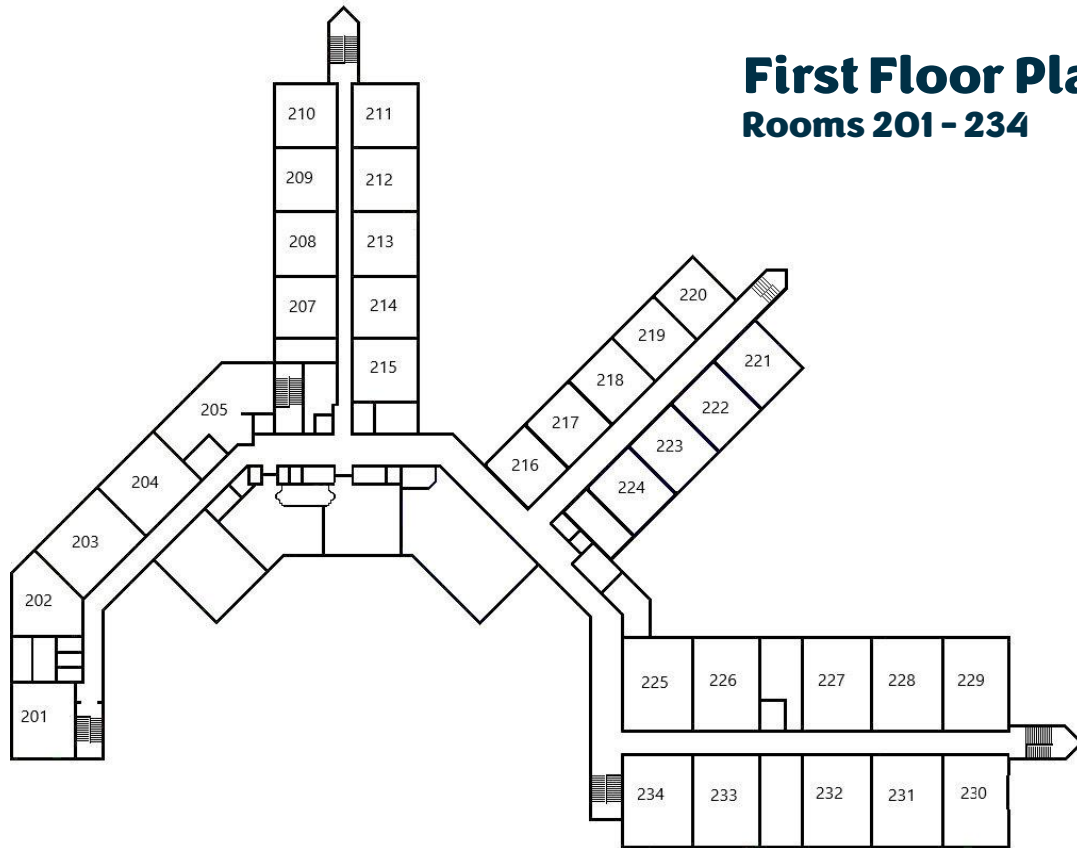
Welcome to the  
**BOOK  
NOOK**



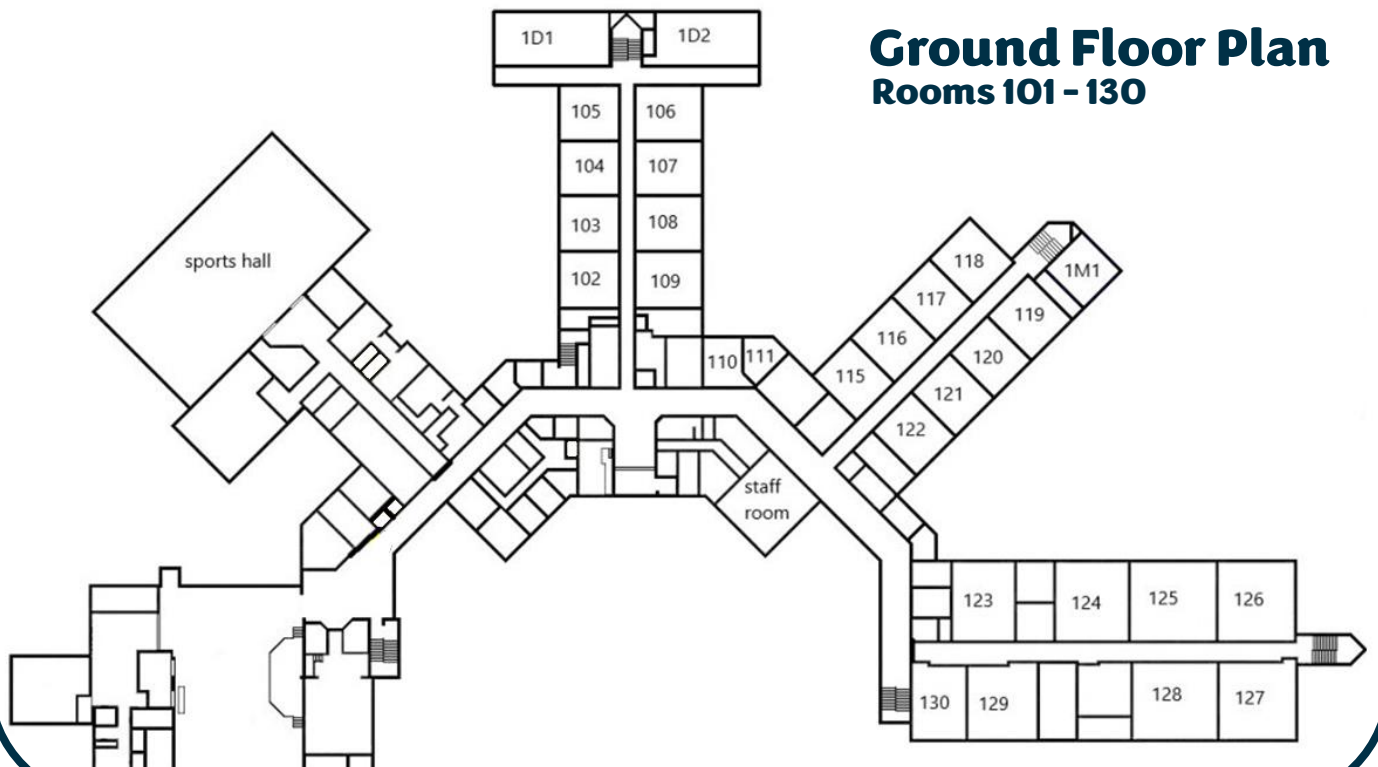
Library Reading Area

# Finding my way around

Its normal to be a little worried about getting lost. Lots of students might get a bit lost as they get to know their new school. It's a new adventure! If you aren't sure how to get somewhere, you can find a teacher or ask another student which way to go.



**First Floor Plan**  
Rooms 201 - 234



**Ground Floor Plan**  
Rooms 101 - 130

# School Timings

Here is an example of what my school day will look like:

Monday to Friday			
8.20am	Staff begin to supervise the arrival of students on site. All students should enter via the side gate.		
8.35am	Bell rings: students should make their way to registration		
Monday		Tuesday to Friday	
8.40am – Start of registration and World Ready session (8.40-9.25am)		8.40am – Start of registration (8.40 to 8.55am)	
9.25am - 10.20am	Period 1	8.55am - 9.55am	Period 1
10.20am – 11.15am	Period 2	9.55am - 10.55am	Period 2
11.15am- 11.30am	Break	10.55am - 11.10am	Break
11.30am - 12.25pm	Period 3	11.10am - 12.10pm	Period 3
12.25pm - 1.15pm	Lunch time	12.10pm - 1.05pm	Lunch time
1.15pm – 2.10pm	Period 4	1.05pm - 2.05pm	Period 4
2.10pm – 3.05pm	Period 5	2.05pm - 3.05pm	Period 5
3.05pm	End of school day	3.05pm	End of school day

## Subjects at Key Stage 3

Art	Food & Catering	Music
Beliefs & Values	Geography	Physical Education (PE)
Design & Technology	History	Science
Drama	Mathematics	World Ready (PSHE)
English	Modern Foreign Languages (MFL)	

# School Uniform



## Blazers, ties, shirts and jumpers

- Navy blazer with the school badge
- Plain white school shirt buttoned to the neck
- School tie
- Navy v-neck jumper - optional

## Trousers and skirts

- Opaque grey tights worn with skirts - no socks.
- Plain grey formal straight cut trousers
- Plain grey pleated or straight pencil skirt

## Footwear

- Plain black, formal shoes with Black socks. No boots or trainers.

## PE kit

- PE polo shirt with Rye Hills logo
- Black shorts – compulsory item
- Tracksuit bottoms/leggings – optional item
- Mid layer top – optional item
- Hoodie – optional item
- Black sports sock – compulsory item
- Indoor trainers

# Key People



**Miss Sands**  
**Head of Transition**



**Mrs Hodgson**  
**Year 7 Year Manager**

Miss Sands is the person who oversees transition and works very closely with the year 6 teachers to ensure that your transition into Rye Hills is an enjoyable one.

Mrs Hodgson is your year manager for year 7 and will work with Miss Sands throughout the transition process. She will also be your 'go to' person in Year 7 if you need any help or support.